



# CITY OF SPEARFISH

625 FIFTH STREET, SPEARFISH, SOUTH DAKOTA 57783

## WINDOWS – EGRESS AND CODE INFORMATION

### BEDROOM FIRE ESCAPE AND RESCUE WINDOW REQUIREMENTS:

Every sleeping room below the fourth story shall have at least one operable window or door approved for emergency escape or rescue which shall open directly onto a public street, public alley, yard or court. The units shall be operable from the inside to provide a full clear opening without the use of separate tools.

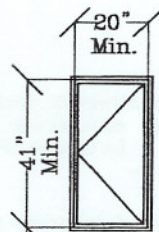
### WINDOW SPECIFICATIONS:

All escape or rescue windows shall have a minimum net clear opening area of 5.7 square feet. The minimum net clear opening height dimension shall be 24 inches. The minimum width dimension shall be 20 inches. When windows are provided as a method of escape or rescue they shall have a finished sill height not more than 44 inches above the finished floor.

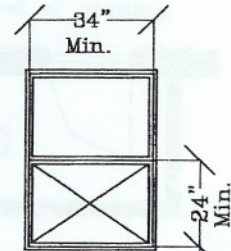
Bars, grills, grates or similar devices may be installed on emergency escape or rescue windows or doors, provided:

- (1) Such devices are equipped with approved release mechanisms which are operable from the inside without the use of a key or special knowledge or effort, and..
- (2) The building is equipped with smoke detectors installed in accordance with Section 310 of the Uniform Building Code.

Minimum size window for 20" clear width.



Minimum size window for 34" clear width.



Openable Area:  
5.7 Sq. Ft. Minimum

Finish Floor

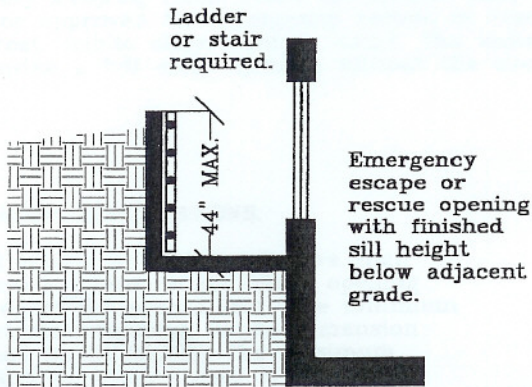
## MINIMUM SIZED RESCUE OR ESCAPE WINDOWS FROM SLEEPING ROOMS Section 310.4



# EMERGENCY ESCAPES

## Section 310.4

ESCAPE AND RESCUE WINDOWS WITH A FINISHED SILL HEIGHT BELOW THE ADJACENT GROUND ELEVATION SHALL HAVE A WINDOW WELL.

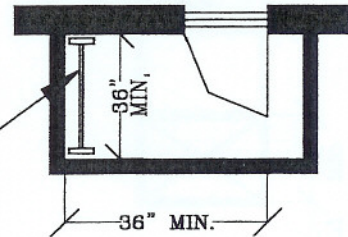


### WINDOW WELLS:

Window wells required for escape or rescue windows shall have a minimum width of 36 inches. The window well length shall be the window width plus an additional 6 inches on each side of the window. No window well shall be deeper than 44 inches unless ready access is made available, i.e. steps or ladder.

Net clear dimensions when fully opened to provide 9 square feet of opening.

Ladder or stair permitted to encroach maximum of 6 inches into required dimensions.



WINDOW WELL is a soil-retaining structure at a window having a sill height lower than the adjacent ground elevation. Section 224.

### Bedroom Window Egress:

Minimum area & height and width requirements (in inches).

W	20	20.5	21	21.5	22	22.5	23	23.5	24	24.5
H	41.0	40.0	39.1	38.2	37.3	36.5	35.7	34.9	34.2	33.5

W	25	25.5	26	26.5	27	27.5	28	28.5	29	29.5
H	32.8	32.2	31.6	31.0	30.4	29.8	29.3	28.8	28.3	27.8

W	30	30.5	31	31.5	32	32.5	33	33.5	34
H	27.4	26.9	26.5	26.1	25.7	25.3	24.9	24.5	24