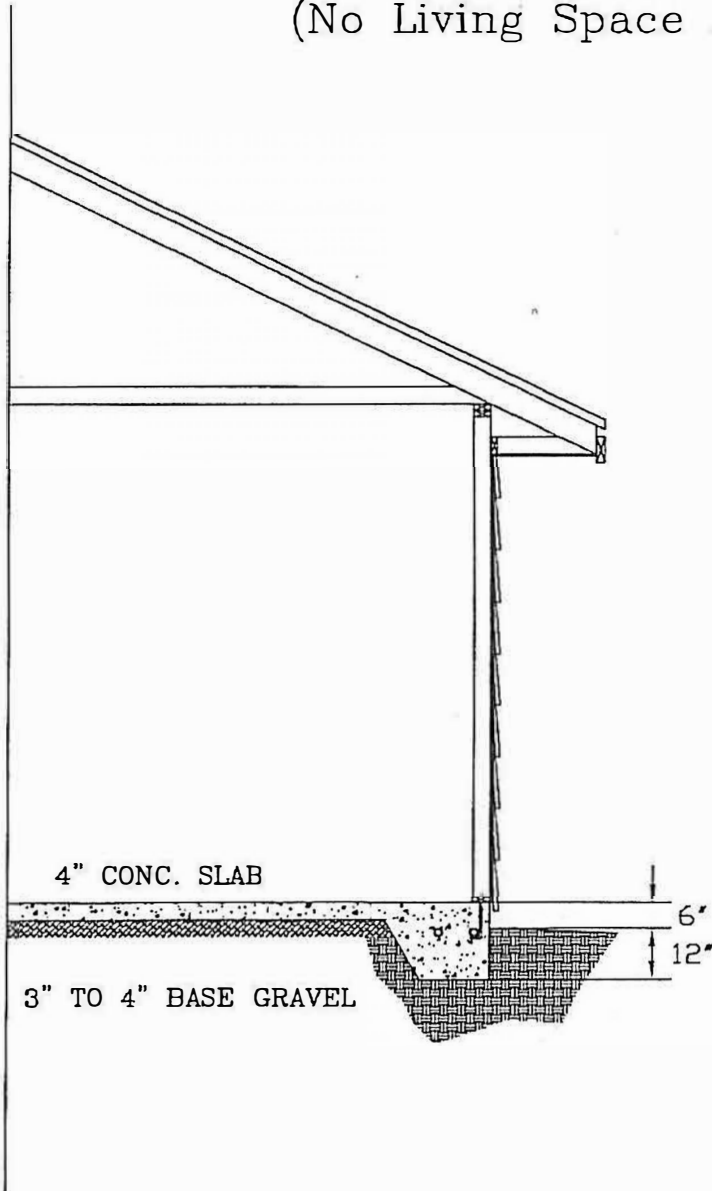




# CITY OF SPEARFISH

625 FIFTH STREET, SPEARFISH, SOUTH DAKOTA 57783

## MINIMUM REQUIREMENTS FOR DETACHED GARAGE SINGLE STORY 1,024 SQUARE FEET OR LESS (No Living Space Allowed)



FACTORY ENGINEERED TRUSS  
30 LB. SNOW LOAD (CERTIFIED)  
SHEATHING  
ROOFING

DOUBLE TOP PLATE  
RAFTER TIES -- 2 PER TRUSS  
RAIN GUTTER/DOWN SPOUTS

SIDING  
SHEATHING  
2X FRAMING

2X4 TREATED OR REDWOOD PLATE WITH SILL SEAL  
1/2"  $\phi$  X 10" A. B. @ 6' O. C.  
12" FROM CORNERS  
7" EMBEDDED MINIMUM

GRADE TO BE A MIN. OF 6" BELOW BOTTOM  
OF SIDING. SLOPE 1/2" PER FT.  
FOR 6 TO 10 FT. MIN.

16" X 18" DP. THICKENED EDGE  
2-#4 REBAR, CONT. PERIMETER OF FND.

